



Santa Rosa Memorial Hospital

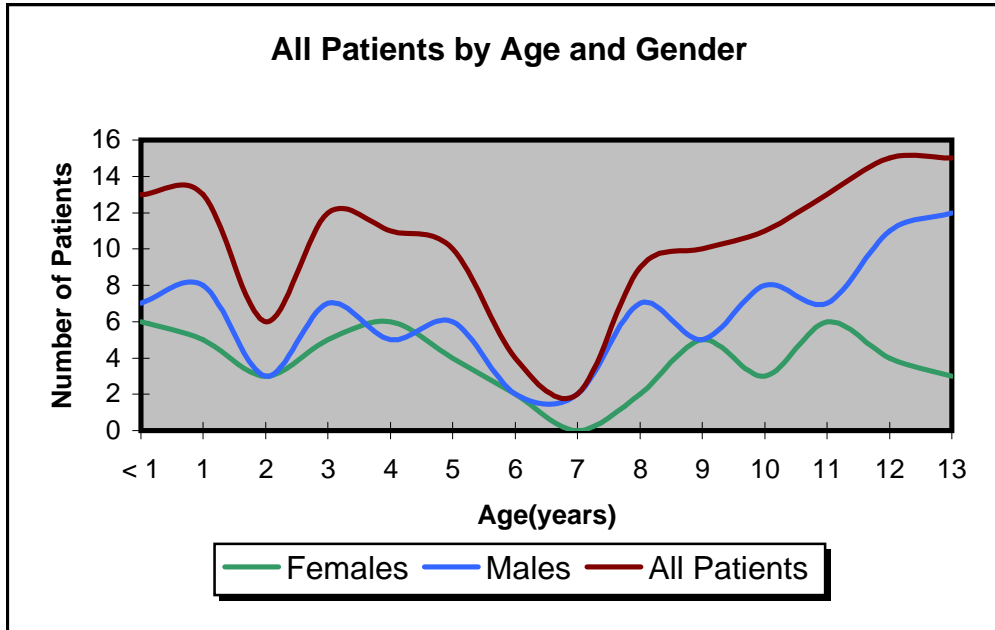
Trauma Services

Summary of Pediatric Trauma Patients

Reporting Dates – Jan 1, 2004 – May 31, 2006

The mission of the Santa Rosa Memorial Hospital Trauma Services is to provide complete and comprehensive care to all patients suffering from a traumatic injury. We have a commitment to provide this care through a cohesive and coordinated multidisciplinary team approach, which is typified by mutual respect, trust, collaboration, and commitment to continuous quality management.

Demographics of Pediatric Trauma Patients
All Pediatric Trauma Patients
 January 1, 2004 - May 31, 2006



All Pediatric Trauma Patients					
Age in Years	Total Patients	Females		Males	
		Count	% of group	Count	% of group
< 1	13	6	46%	7	54%
1	13	5	38%	8	62%
2	6	3	50%	3	50%
3	12	5	42%	7	58%
4	11	6	55%	5	45%
5	10	4	40%	6	60%
6	4	2	50%	2	50%
7	2	0	0%	2	100%
8	9	2	22%	7	78%
9	10	5	50%	5	50%
10	11	3	27%	8	73%
11	13	6	46%	7	54%
12	15	4	27%	11	73%
13	15	3	20%	12	80%
Totals	144	54	38%	90	63%

Summary of all pediatric patients

January 1, 2004 - May 31, 2006

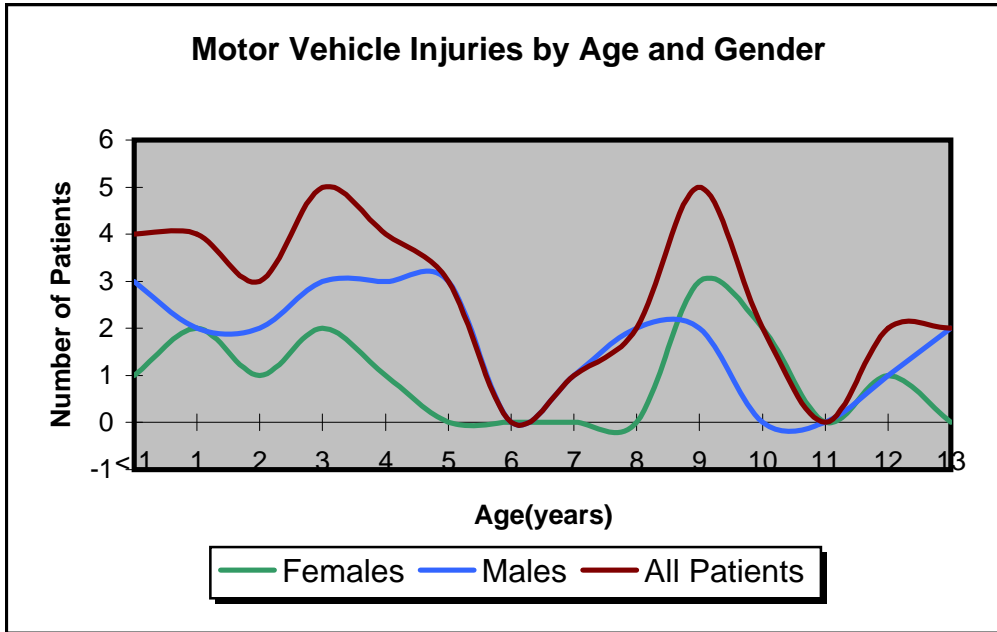
Total Pediatric Patients
144

Mechanism of Injury	Total Pts		Injury Severity Score (ISS)				
			0 - 4	5 - 8	9 - 15	16 - 25	26 - 75
Collisions/MVA	38	26%	25	6	4	2	1
Falls	35	24%	16	7	7	4	1
Bike Related	24	17%	11	6	3	4	0
Pedestrian	19	13%	7	5	2	5	0
Accidentally Struck by Object	13	9%	5	2	2	1	3
Motorized Bike/MCC	6	4%	3	1	2	0	0
Animal Accidents	3	2%	2	0	1	0	0
Burns	3	2%	0	0	1	2	0
Accidental Penetrating Injury	1	1%	1	0	0	0	0
Assaults	1	1%	1	0	0	0	0
GSW	1	1%	0	0	1	0	0
Total	144		71	27	23	18	5

Disposition from ED		
Home	66	45.8%
Ward	40	27.8%
Other Hospital	11	7.6%
OR	13	9.0%
ICU	8	5.6%
Direct Admit	5	3.5%
Died in ER	1	0.7%
Total	144	

All non-superficial ICD9 Diagnoses of 144 Pediatric Trauma Patients		# of Dx's	% of total
920 - 924	Contusion with intact skin surface	69	23%
850 - 854	Intracranial injury, excluding those with skull fractures	53	18%
870 - 879	Open wound of head, neck, and trunk	45	15%
810 - 829	Fracture of extremities	35	12%
940 - 949	Burns	23	8%
800 - 804	Fractures of skull, with or without intracranial injury	22	7%
860 - 869	Internal injury of chest, abdomen, and pelvis	20	7%
805 - 809	Fracture of neck and trunk	17	6%
880 - 897	Open wound of extremities	4	1%
840 - 849	Sprains and strains of joints/muscles	5	2%
990 - 995	Other & unspecified effects of external causes	4	1%
950 - 957	Injury to nerves and spinal cord	3	1%
Total Diagnoses		300	

Demographics of Pediatric Trauma Patients
Motor Vehicle Collision Pediatric Trauma Patients
 January 1, 2004 - May 31, 2006



Motor Vehicle Injuries					
Age in Years	Total Patients	Females		Males	
		Count	% of group	Count	% of group
< 1	4	1	25%	3	75%
1	4	2	50%	2	50%
2	3	1	33%	2	67%
3	5	2	40%	3	60%
4	4	1	25%	3	75%
5	3	0	0%	3	100%
6	0	0		0	
7	1	0	0%	1	100%
8	2	0	0%	2	100%
9	5	3	60%	2	40%
10	2	2	100%	0	0%
11	0	0		0	
12	2	1	50%	1	50%
13	2	0	0%	2	100%
Totals	37	13	35%	24	65%

Summary of Motor Vehicle Accident Injuries (Pediatric)

January 1, 2004 - May 31, 2006

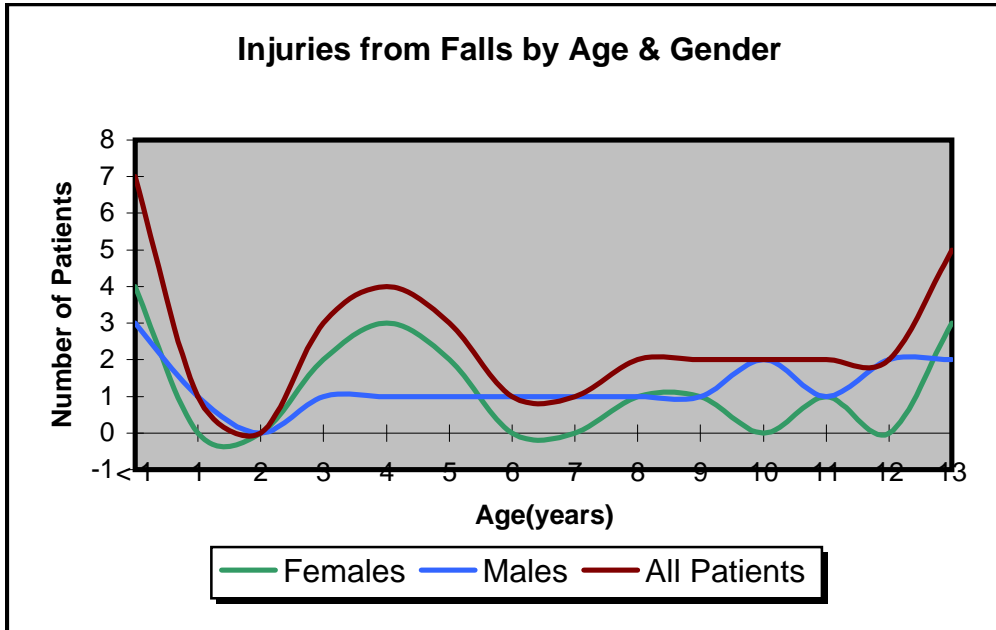
Total Pediatric Injuries from MVAs
37

Age (Years)	Total Pts		Injury Severity Score (ISS)				
			0 - 4	5 - 8	9 - 15	16 - 25	26 - 75
< 1	4	11%	3	0	0	1	0
1	4	11%	3	0	0	0	1
2	3	8%	3	0	0	0	0
3	5	14%	4	1	0	0	0
4	4	11%	2	1	1	0	0
5	3	8%	2	0	0	1	0
6	0	0%	0	0	0	0	0
7	1	3%	1	0	0	0	0
8	2	5%	1	0	1	0	0
9	5	14%	3	1	1	0	0
10	2	5%	1	1	0	0	0
11	0	0%	0	0	0	0	0
12	2	5%	1	0	1	0	0
13	2	5%	0	2	0	0	0
Total	37		24	6	4	2	1

Protective Devices		
None	12	32.4%
3 Pt Restraint	9	24.3%
Child Seat	7	18.9%
Lap/Shld Only	4	10.8%
Bag+Belt	3	8.1%
Other	2	5.4%
Total	37	

All non-superficial ICD9 Diagnoses of 37 Pediatric MVA Injuries		# of Dx's	% of total
920 - 924	Contusion with intact skin surface	21	34%
870 - 879	Open wound of head, neck, and trunk	14	23%
850 - 854	Intracranial injury, excluding those with skull fractures	10	16%
810 - 829	Fracture of extremities	6	10%
800 - 804	Fractures of skull, with or without intracranial injury	5	8%
805 - 809	Fracture of neck and trunk	2	3%
860 - 869	Internal injury of chest, abdomen, and pelvis	2	3%
880 - 897	Open wound of extremities	1	2%
840 - 849	Sprains and strains of joints/muscles	1	2%
Total Diagnoses		62	

Demographics of Pediatric Trauma Patients
Injuries from Falls
 January 1, 2004 - May 31, 2006



Injuries from Falls					
Age in Years	Total Patients	Females		Males	
		Count	% of group	Count	% of group
< 1	7	4	57%	3	43%
1	1	0	0%	1	100%
2	0	0		0	
3	3	2	67%	1	33%
4	4	3	75%	1	25%
5	3	2	67%	1	33%
6	1	0	0%	1	100%
7	1	0	0%	1	100%
8	2	1	50%	1	50%
9	2	1	50%	1	50%
10	2	0	0%	2	100%
11	2	1	50%	1	50%
12	2	0	0%	2	100%
13	5	3	60%	2	40%
Totals	35	17	49%	18	51%

Summary of Injuries from Falls (Pediatric)

January 1, 2004 - May 31, 2006

Total Pediatric Injuries from Falls
35

Age (Years)	Total Pts		Injury Severity Score (ISS)				
			0 - 4	5 - 8	9 - 15	16 - 25	26 - 75
< 1	7	20%	5	1	0	1	0
1	1	3%	1	0	0	0	0
2	0	0%	0	0	0	0	0
3	3	9%	1	1	1	0	0
4	4	11%	2	1	0	1	0
5	3	9%	1	2	0	0	0
6	1	3%	1	0	0	0	0
7	1	3%	1	0	0	0	0
8	2	6%	0	0	0	1	1
9	2	6%	0	0	1	1	0
10	2	6%	1	1	0	0	0
11	2	6%	0	1	1	0	0
12	2	6%	0	0	2	0	0
13	5	14%	3	0	2	0	0
Total	35		16	7	7	4	1

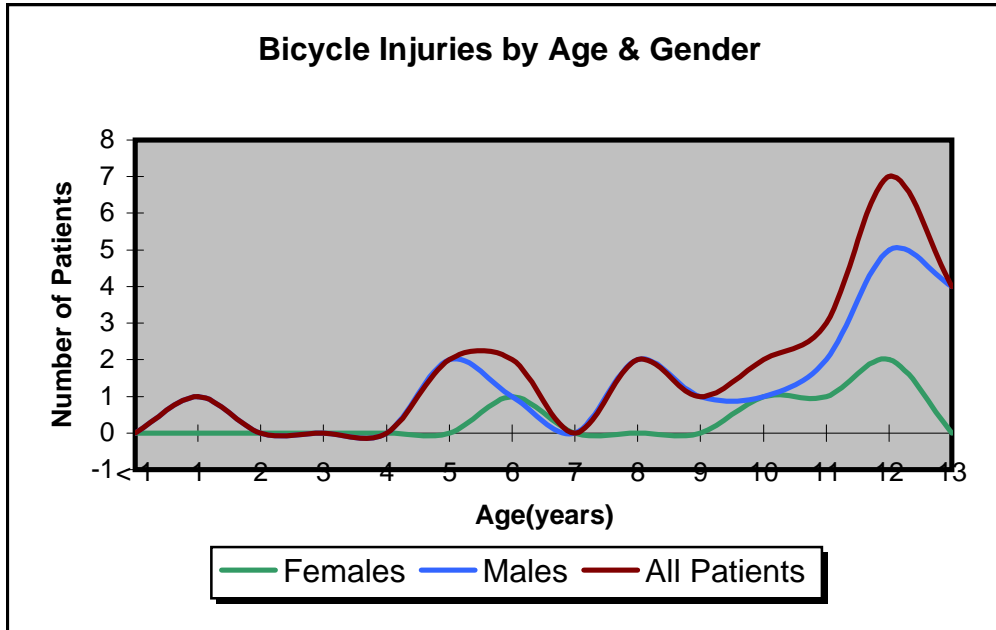
Location of Fall		
Home	14	40.0%
Rec. or Sport	8	22.9%
Unspecified	6	17.1%
Public Building	4	11.4%
Other Specified	2	5.7%
Street	1	2.9%
Total	35	

All non-superficial ICD9 Diagnoses of 35 Pediatric Fall Injuries		# of Dx's	% of total
850 - 854	Intracranial injury, excluding those with skull fractures	17	27%
920 - 924	Contusion with intact skin surface	14	23%
800 - 804	Fractures of skull, with or without intracranial injury	8	13%
870 - 879	Open wound of head, neck, and trunk	6	10%
810 - 829	Fracture of extremities	6	10%
805 - 809	Fracture of neck and trunk	5	8%
860 - 869	Internal injury of chest, abdomen, and pelvis	2	3%
880 - 897	Open wound of extremities	2	3%
840 - 849	Sprains and strains of joints/muscles	1	2%
990 - 995	Other & unspecified effects of external causes	1	2%
Total Diagnoses		62	

Demographics of Pediatric Trauma Patients

Bicycle Injuries

January 1, 2004 - May 31, 2006



Bicycle Injuries					
Age in Years	Total Patients	Females		Males	
		Count	% of group	Count	% of group
< 1	0	0		0	
1	1	0	0%	1	100%
2	0	0		0	
3	0	0		0	
4	0	0		0	
5	2	0	0%	2	100%
6	2	1	50%	1	50%
7	0	0		0	
8	2	0	0%	2	100%
9	1	0	0%	1	100%
10	2	1	50%	1	50%
11	3	1	33%	2	67%
12	7	2	29%	5	71%
13	4	0	0%	4	100%
Totals	24	5	21%	19	79%

Summary of Bicycle Injuries (Pediatric)

January 1, 2004 - May 31, 2006

Total Pediatric Injuries from Bicycles
24

Age (Years)	Total Pts		Injury Severity Score (ISS)				
			0 - 4	5 - 8	9 - 15	16 - 25	26 - 75
< 1	0	0%	0	0	0	0	0
1	1	4%	0	1	0	0	0
2	0	0%	0	0	0	0	0
3	0	0%	0	0	0	0	0
4	0	0%	0	0	0	0	0
5	2	8%	2	0	0	0	0
6	2	8%	0	1	1	0	0
7	0	0%	0	0	0	0	0
8	2	8%	2	0	0	0	0
9	1	4%	1	0	0	0	0
10	2	8%	1	0	0	1	0
11	3	13%	2	0	1	0	0
12	7	29%	2	3	1	1	0
13	4	17%	1	1	0	2	0
Total	24		11	6	3	4	0

Protective Devices		
Helmet	14	58.3%
Child Seat	1	4.2%
Unknown	1	4.2%
None	8	33.3%
Total	24	

All non-superficial ICD9 Diagnoses of 24 Pediatric Bicycle Injuries		# of Dx's	% of total
920 - 924	Contusion with intact skin surface	12	23%
850 - 854	Intracranial injury, excluding those with skull fractures	9	17%
870 - 879	Open wound of head, neck, and trunk	9	17%
810 - 829	Fracture of extremities	6	12%
805 - 809	Fracture of neck and trunk	6	12%
860 - 869	Internal injury of chest, abdomen, and pelvis	4	8%
880 - 897	Open wound of extremities	3	6%
840 - 849	Sprains and strains of joints/muscles	1	2%
800 - 804	Fractures of skull, with or without intracranial injury	1	2%
830 - 839	Dislocation	1	2%
Total Diagnoses		52	

Bike Protective Device By Age (Pediatric)
January 2004 - May 2006

Bike Protective Devices					
Age (Years)	Protective Device Used				Totals
	Helmet	None	Child Seat	Unkn	
< 1	0	0	0	0	0
1	0	0	1	0	1
2	0	0	0	0	0
3	0	0	0	0	0
4	0	0	0	0	0
5	2	0	0	0	2
6	1	1	0	0	2
7	0	0	0	0	0
8	0	2	0	0	2
9	1	0	0	0	1
10	1	1	0	0	2
11	2	1	0	0	3
12	4	3	0	0	7
13	3	0	0	1	4
Totals:	14	8	1	1	24

Summary of Pedestrian Injuries (Pediatric)

January 1, 2004 - May 31, 2006

Total Pediatric Injuries from Pedestrian
19

Recorded Streets of Injury	
Street of Injury	# of pts
Corby Ave	2
Montgomery Dr	2
Humboldt St	1
W. 9th St	1
W. 3rd St	1
Quarry Ridge	1
Poppy Lane	1
Stony Point Rd	1
Jane Dr	1
Commerce Dr	1
Dutton Ave	1
Edith	1
Western Ave	1
Donna Maria	1
Moorland Dr	1
Badger Rd	1
Hearn Ave	1
Total Ped. Pedestrians	19

Age (Years)	Total Pts		Injury Severity Score (ISS)				
			0 - 4	5 - 8	9 - 15	16 - 25	26 - 75
< 1	0	0%	0	0	0	0	0
1	4	21%	2	2	0	0	0
2	3	16%	2	1	0	0	0
3	2	11%	0	1	0	1	0
4	1	5%	1	0	0	0	0
5	1	5%	0	0	0	1	0
6	0	0%	0	0	0	0	0
7	0	0%	0	0	0	0	0
8	0	0%	0	0	0	0	0
9	2	11%	1	0	1	0	0
10	3	16%	0	0	1	2	0
11	1	5%	0	1	0	0	0
12	1	5%	1	0	0	0	0
13	1	5%	0	0	0	1	0
Total	19		7	5	2	5	0

All non-superficial ICD9 Diagnoses of 19 Pediatric Pedestrian Injuries		# of Dx's	% of total
920 - 924	Contusion with intact skin surface	9	20%
850 - 854	Intracranial injury, excluding those with skull fractures	8	18%
810 - 829	Fractures of extremities	7	16%
870 - 879	Open wound of head, neck, and trunk	6	14%
800 - 804	Fractures of skull, with or without intracranial injury	6	14%
860 - 869	Internal injury of chest, abdomen, and pelvis	4	9%
805 - 809	Fracture of neck and trunk	2	5%
880 - 897	Open wound of extremities	1	2%
950 - 957	Injuries to Nerves and Spinal Cord	1	2%
Total Diagnoses		44	