

Injury hospitalizations

Trend

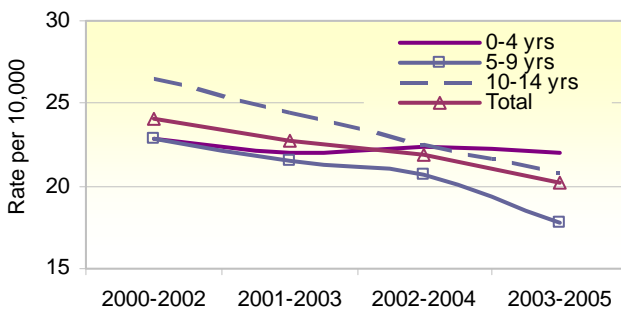
Unintentional injury hospitalization rates by age, three year moving average, Sonoma County

	2000-2002	2001-2003	2002-2004	2003-2005
0-4 yrs	22.8	22.0	22.4	22.0
5-9 yrs	22.8	21.6	20.7	17.8
10-14 yrs	26.4	24.5	22.6	20.9
Total	24.1	22.7	21.9	20.3

Source: CA Office of Statewide Health Planning and Development, Patient Discharge Data 2000-2005

Unintentional injury hospitalization rates have decreased significantly in all age categories but 0-4 yrs where rates remain constant. The overall unintentional injury hospitalization rate for ages 0-14 has also decreased significantly.

Unintentional injury hospitalization rates by age, three year moving average, Sonoma County



Source: CA Office of Statewide Health Planning and Development, Patient Discharge Data 2000-2005

Intentional injury hospitalization rates by age*, three year moving average, Sonoma County

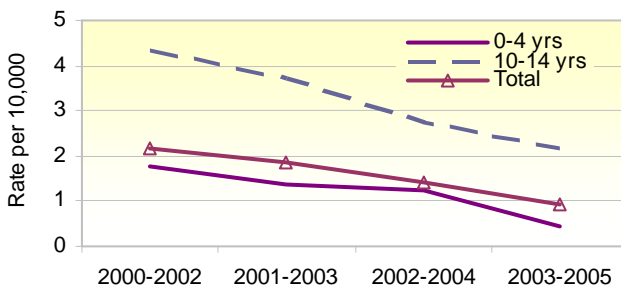
	2000-2002	2001-2003	2002-2004	2003-2005
0-4 yrs	1.8	1.4	1.2	0.4
10-14 yrs	4.3	3.7	2.7	2.2
Total	2.2	1.9	1.4	0.9

*Rate for 5-9 year age category unstable due to small numbers

Source: CA Office of Statewide Health Planning and Development, Patient Discharge Data 2000-2005

Hospitalization rates for intentional injuries to children ages 0-14 decreased overall and in the 0-4 and 10-14 year age categories.

Intentional injury hospitalization rates by age, three year moving average, Sonoma County



Source: CA Office of Statewide Health Planning and Development, Patient Discharge Data 2000-2005

By gender and age category

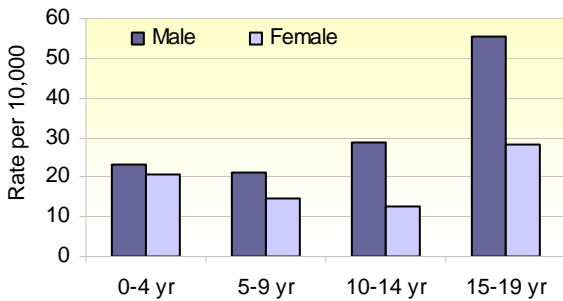
Injury hospitalizations by gender and age category, Sonoma County 2003-2005

	Male		Female		Total	
	Annual Average 2003-2005	Rate per 10,000	Annual Average 2003-2005	Rate per 10,000	Annual Average 2003-2005	Rate per 10,000
Unintentional						
0-4 yr	36	23.1	31	20.7	67	21.9
5-9 yr	33	21.0	22	14.6	55	17.9
10-14 yr	50	28.8	21	12.6	71	20.9
15-19 yr	96	55.2	47	28.4	143	42.2
Intentional						
0-4 yr	<5	*	0	0	<5	*
5-9 yr	0	0	0	0	0	0
10-14 yr	<5	*	5	*	7	2.1
15-19 yr	23	13.2	26	15.7	49	14.4

*Rate unstable due to small numbers

Source: CA Office of Statewide Health Planning and Development, Patient Discharge Data 2003-2005

Unintentional injury hospitalization rates by age category and gender, Sonoma County 2003-2005



Source: CA Office of Statewide Health Planning and Development, Patient Discharge Data 2003-2005

Unintentional injury hospitalization rates are higher among males in every age category. Teens 15-19 years have the highest rates of unintentional and intentional injury hospitalizations.

By race/ethnicity

Unintentional injury hospitalizations by race/ethnicity, ages 0-14 Sonoma County 2003-2005

	Annual Average 2003-2005	Rate per 10,000
Unintentional		
White, non-Hispanic	125	24.2
Hispanic	46	13.7
Asian/Pacific Islander	5	14.0
African American	<5	*
American Indian	<5	*
Other/Unknown	13	N/A
Intentional		
White, non-Hispanic	6	1.2
Hispanic	<5	*
Asian/Pacific Islander	0	0
African American	0	0
American Indian	0	0
Other/Unknown	0	N/A

*Rate unstable due to small numbers

Source: California Office of Statewide Health Planning and Development, Patient Discharge Data, 2003-2005

White, non-Hispanic children ages 0-14 had the highest rates of unintentional injury hospitalizations of all race/ethnic groups for which data were available.

It is difficult to evaluate rates for intentional injury hospitalizations by race/ethnicity due to small numbers.

By cause

Unintentional injury hospitalizations by cause, ages 0-14 Sonoma County 2003-2005

	N	%
Fall	240	41.5%
Motor vehicle	57	9.8%
Struck by object	40	6.9%
Poisoning	38	6.6%
Bicyclist, other	36	6.2%
Natural/environmental	28	4.8%
Transportation, other	25	4.3%
Burn	24	4.1%
Suffocation	14	2.4%
Cut/pierce	11	1.9%
Overexertion	9	1.6%
Drowning/submersion	8	1.4%
Pedestrian, other	<5	<1%
Machinery	<5	<1%
Firearms	<5	<1%
Other	43	7.4%
Total	579	100%

Source: California Office of Statewide Health Planning and Development, Patient Discharge Data

Falls were the most common cause of unintentional injury hospitalization among children ages 0-14.

Intentional injury by cause, 0-14 yrs Sonoma County 2003-2005

	N	%
Self-inflicted	18	66.7%
Assault	9	33.3%
Total	27	100%

Source: California Office of Statewide Health Planning and Development, Patient Discharge Data

Self-inflicted injury is responsible for two thirds of all intentional injury hospitalizations among children ages 0-14.

By zip code

Unintentional injury hospitalizations by zip code, ages 0-14 Sonoma County 2005

	N	Rate* per 10,000
94928	14	15.9
94952	9	14.6
94954	18	21.7
95401	9	12.0
95403	9	10.5
95404 (Northeast & southeast Santa Rosa)	23	36.6
95407 (Southwest Santa Rosa)	27	34.0
95409	5	12.2
95425	6	31.3
95448	6	17.1
95472	12	21.3
95476	7	11.2
95492 (Windsor)	18	29.2
Other	24	N/A
Total	187	20.2

*Population data from 2000 US Census

Source: California Office of Statewide Health Planning and Development, Patient Discharge Data

Unintentional injury hospitalization rates were highest in zip codes 95404, 95407, and 95492.

Emergency room visits due to injury

By gender and age category

Emergency room visits by gender and age category, Sonoma County 2005

	Male		Female		Total	
	N	Rate per 10,000	N	Rate per 10,000	N	Rate per 10,000
Unintentional						
0-4 yr	1103	701.3	904	596.6	2007	649.9
5-9 yr	779	495.7	591	392.8	1370	445.4
10-14 yr	1201	705.6	710	431.2	1911	570.7
15-19 yr	1471	837.4	872	519.6	2343	682.1
Intentional						
0-4 yr	<5	*	<5	*	7	2.3
5-9 yr	6	3.8	<5	*	10	3.3
10-14 yr	26	15.3	39	23.7	65	19.4
15-19 yr	183	104.2	78	46.5	261	76.0

*Rates unstable due to small numbers

Source: California Office of Statewide Health Planning and Development, ER visits 2005

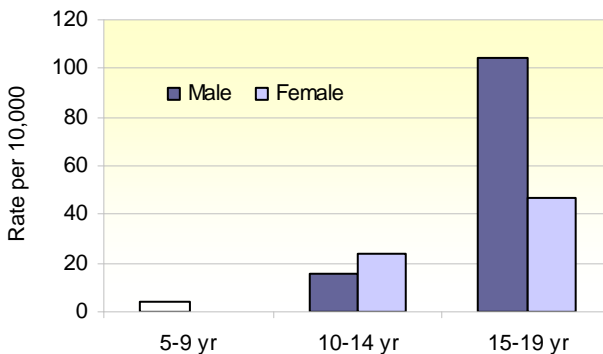
Emergency room visits resulting from unintentional injuries by gender and age category, Sonoma County 2005



Rates of emergency room visits pattern injury hospitalizations. Males have higher rates than females and the highest rates are seen among teens 15-19 years.

Source: CA Office of Statewide Health Planning and Development, Emergency Room Data 2005

Emergency room visits resulting from intentional injuries by gender and age category*, Sonoma County 2005



*Rates for ages 0-4 and 5-9 females are unstable due to small numbers

Source: CA Office of Statewide Health Planning and Development, Emergency Room Data 2005

By race/ethnicity

Emergency room visits by race/ethnicity, Sonoma County 2005

	N	Rate per 10,000
Unintentional		
White, non-Hispanic	3260	655.0
Hispanic	1270	360.7
Asian/Pacific Islander	58	159.0
African American	104	760.2
American Indian	26	384.6
Other/Unknown/Missing	573	N/A
Total	5291	556.2
Intentional		
White, non-Hispanic	40	8.0
Hispanic	30	8.5
Asian/Pacific Islander	<5	*
African American	<5	*
American Indian	<5	*
Other/Unknown	8	N/A
Total	82	8.6

*Rate unstable due to small numbers

Source: California Office of Statewide Health Planning and Development, ER visits 2005

Rates of injuries resulting in a visit to the emergency room among different racial/ethnic groups are difficult to interpret due to the high proportion of Unknowns in the data set. For race/ethnic groups that were indicated in the ER data, rates for unintentional injuries are highest among African Americans and White, non-Hispanics. Rates for intentional injuries are similar for White, non-Hispanics and Hispanics and do not differ from the total rate.

By cause

Unintentional injuries resulting in emergency room visits by cause, ages 0-14 Sonoma County 2005

	N	%
Fall	1991	37.6%
Struck by object	947	17.9%
Overexertion	340	6.4%
Cut/pierce	331	6.3%
Natural/environmental	256	4.8%
Motor vehicle	254	4.8%
Bicyclist, other	207	3.9%
Poisoning	176	3.3%
Burn	106	2.0%
Transportation, other	81	1.5%
Suffocation	26	0.5%
Drowning/submersion	7	0.1%
Pedestrian, other	5	0.1%
Machinery	6	0.1%
Firearms	6	0.1%
Other	552	10.4%
Total	5291	100%

Source: California Office of Statewide Health Planning and Development, ER visits 2005

Intentional injuries resulting in emergency room visit by cause, ages 0-14 Sonoma County 2005

	N	%
Assault	68	82.9%
Self-inflicted	14	17.1%
Total	82	100%

Source: California Office of Statewide Health Planning and Development, ER visits 2005

By zip code

Unintentional injuries resulting in emergency room visit by patient zip code, ages 0-14 Sonoma County 2005

	N	Rate* per 10,000
94922	5	446.4
94923	14	703.5
94928	271	308
94931	63	373.2
94951	38	572.3
94952	422	682.8
94954 (Petaluma)	592	714.1
95401	372	496.9
95403	401	468.1
95404	368	580.3
95405	183	452.1
85407	518	652.3
95409	230	562.8
95421	10	389.1
95425 (Cloverdale)	163	849.8
95436	46	415.2
95439 (Fulton)	12	1132.1
95441	28	619.5
95442	44	648
95444 (Graton)	15	1666.7
95446	46	619.1
95448	225	639.7
95452	11	404.4
95462	11	536.6
95465	15	501.7
95471 (Rio Nido)	9	1698.1
95472	290	515.8
95476	387	619.4
95492	375	607.5
Other	127	N/A
Total	5291	572.1

*US Census 2000

Source: California Office of Statewide Health Planning and Development, ER visits 2005

Emergency room visit rates were highest in zip codes 94954, 95425, 95439, 95444, and 95471.

Unintentional injury deaths

Trend by gender

Unintentional injury deaths and death rates for children ages 0-14 by gender, four year moving average, Sonoma County

	2000-2003		2001-2004		2002-2005	
	Deaths	Rate per 100,000	Deaths	Rate per 100,000	Deaths	Rate per 100,000
Male	10	5.2	12	6.2	11	5.7
Female	9	4.9	10	5.4	9	4.8
Total	19	5.1	22	5.8	20	5.3

Source: CA Department of Health Services, Vital Statistics, Death Records and 2005 Child Death Review Team Sonoma County

Unintentional injury death rates are similar by gender. Rates have not changed significantly over the time period.

Unintentional injury deaths and death rates for children ages 15-19 by gender, four year moving average, Sonoma County

	2000-2003		2001-2004		2002-2005	
	Deaths	Rate per 100,000	Deaths	Rate per 100,000	Deaths	Rate per 100,000
Male	19	27.8	23	33.3	22	31.7
Female	9	14.1	6	9.3	6	9.1
Total	28	21.2	29	21.7	28	20.7

Source: CA Department of Health Services, Vital Statistics, Death Records and 2005 Child Death Review Team Sonoma County

Unintentional injury death rates among teens ages 15-19 are higher for males than females. Rates have not changed significantly over the time period.

By race/ethnicity

Unintentional injury deaths by race/ethnicity, ages 0-14 Sonoma County 2000-2004

	N	Rate per 100,000
White, non-Hispanic	17	6.2
Hispanic	5	3.4
Asian/Pacific Islander	<5	*
African American	<5	*
2+ races	<5	*
Other	<5	N/A

Source: CDHS, Vital Stats, Death Records

Unintentional injury death rates are higher for White, non-Hispanics than for Hispanic children.

Unintentional injury deaths by race/ethnicity, ages 15-19 Sonoma County 2000-2004

	N	Rate per 100,000
White, non-Hispanic	24	21.4
Hispanic	14	37.8
Asian/Pacific Islander	<5	*
African American	0	0
2+ races	<5	*

Source: CDHS, Vital Stats, Death Records

Unintentional injury death rates are higher among Hispanic teens than White, non-Hispanic teens.

By cause

**Unintentional injury deaths by cause, ages 0-14
Sonoma County 2000-2004**

	N	% of injury deaths
Motor vehicle	11	42.3%
Drowning	<5	*
Pedestrian	<5	*
Suffocation	<5	*
Fall	<5	*
Natural/environmental	<5	*
Struck by object	<5	*
Other	<5	*
Total	26	100.0%

Source: CDHS, Vital Stats, Death Records

Motor vehicle collision was the leading cause of unintentional injury death among children ages 0-14 and adolescents age 15-19.

**Unintentional injury deaths by cause, ages 15-19
Sonoma County 2000-2004**

	N	% of injury deaths
Motor vehicle	31	77.5%
Drowning	<5	*
Fall	<5	*
Struck by object	<5	*
Transportation, other	<5	*
Poisoning	<5	*
Total	40	100.0%

Source: CDHS, Vital Stats, Death Records